



Ardú Bhéal Feirste
Belfast Rising
www.casementpark.ie

GAA Strategic Requirement

- SRC Report 2002 Enhancing Community Development
- Current Ulster GAA Strategy and Ambition 2009-2015 for Stadium between 40,000 and 60,000 capacity as Major Provincial Venue.
- March 2009 Statement from OFMDFM to meet strategic requirements of three sports on projects at major venues.
- **Consultation with Central Council, Counties and Clubs from early 2009 via Standing Committee and high level discussions with key representatives at critical periods.**
- Outline Business Case(OBC) progress with statutory agencies and other two sports between from 2009 to April 2011.

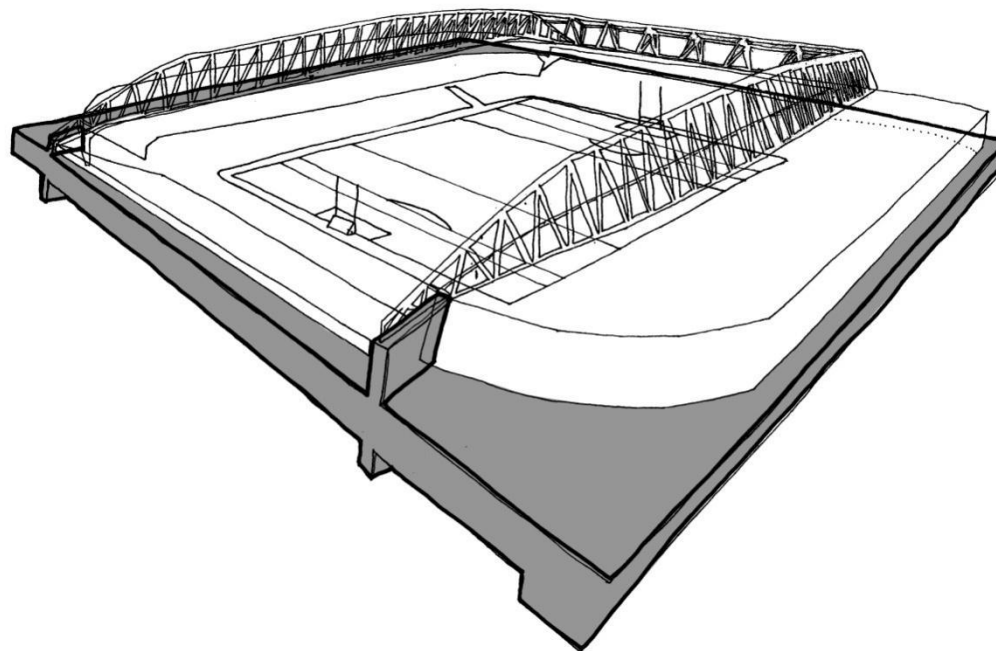
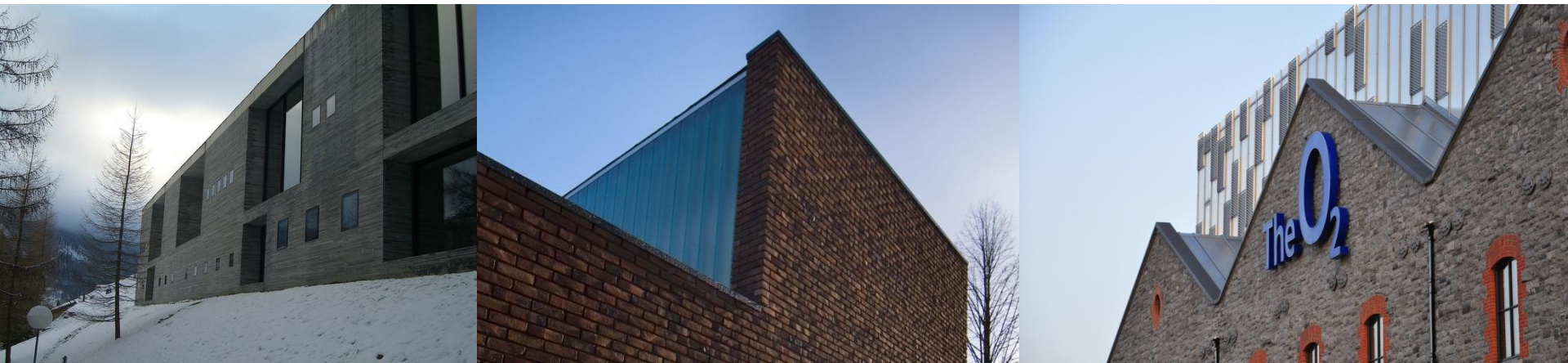
OBC Scheme

“Achieve an ‘Iconic GAA Stadium’ for Ulster and the City of Belfast, on the 12 acre Casement Park site, where the capacity should total 38,000 on an all seated basis. To maximise the potential of the site in providing a state of the art stadium for players and spectators, it is intended that the new facility would provide a variety of usages, including sporting and non-sporting and community applications in order to maximise the sustainability of the project.”

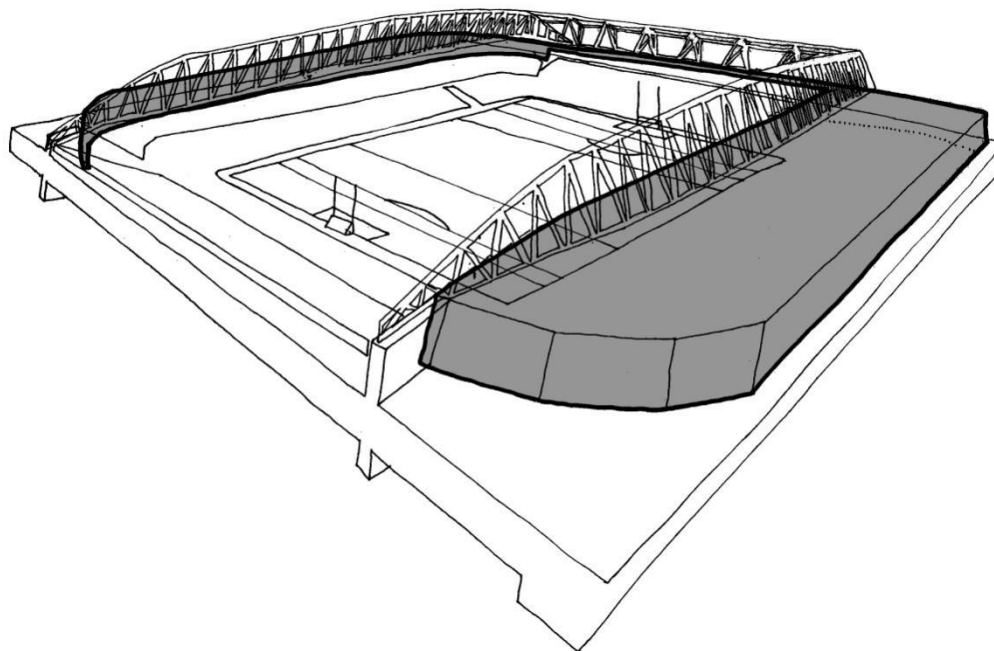
- Club / County / Province National Facility
- **38,000 all seated stadium**
 - **80% covered**
 - **2,000 premium / corporate level seats**



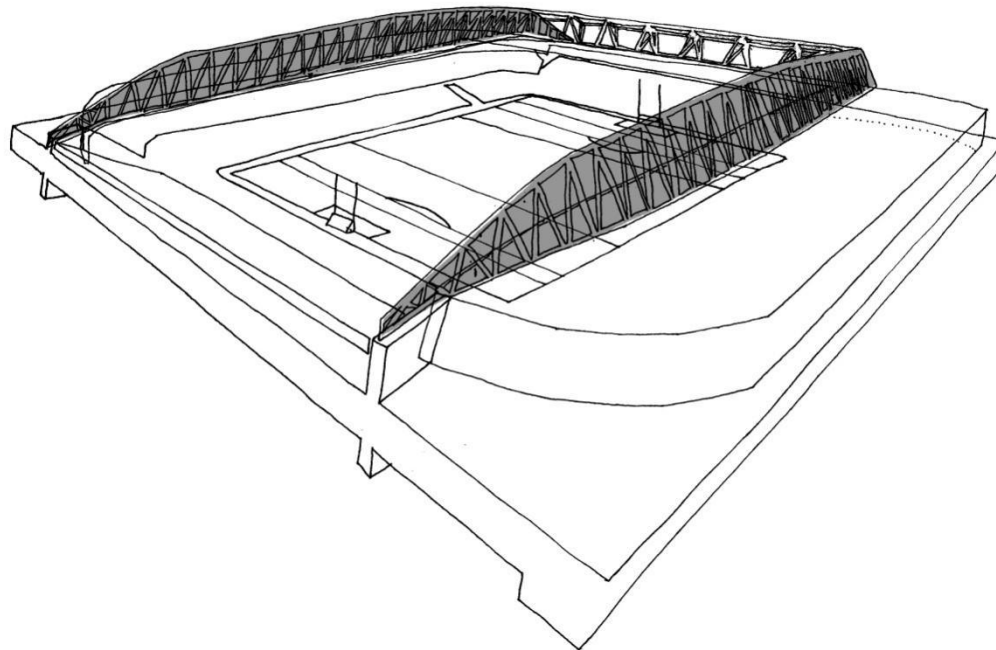




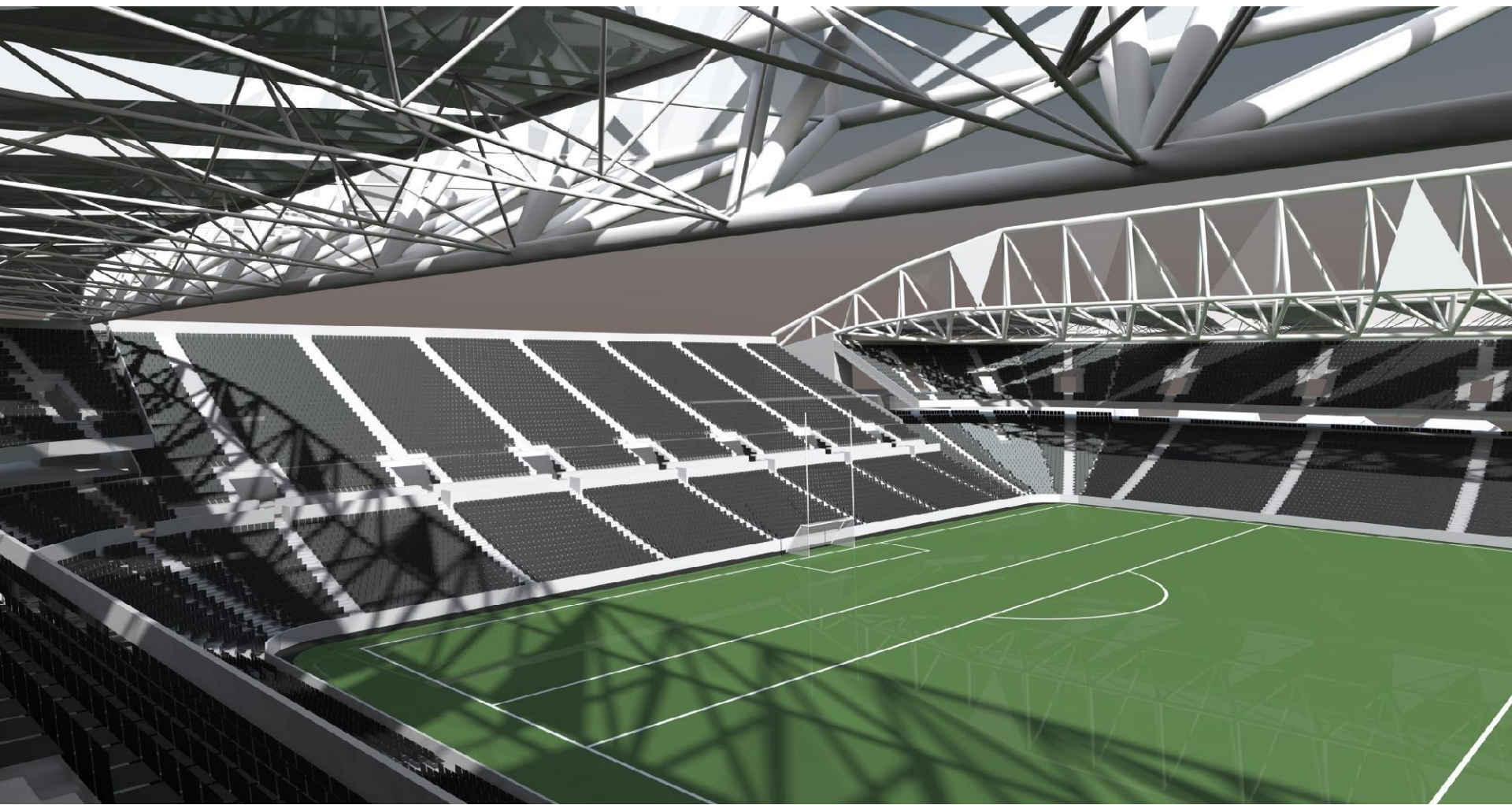
Plinth

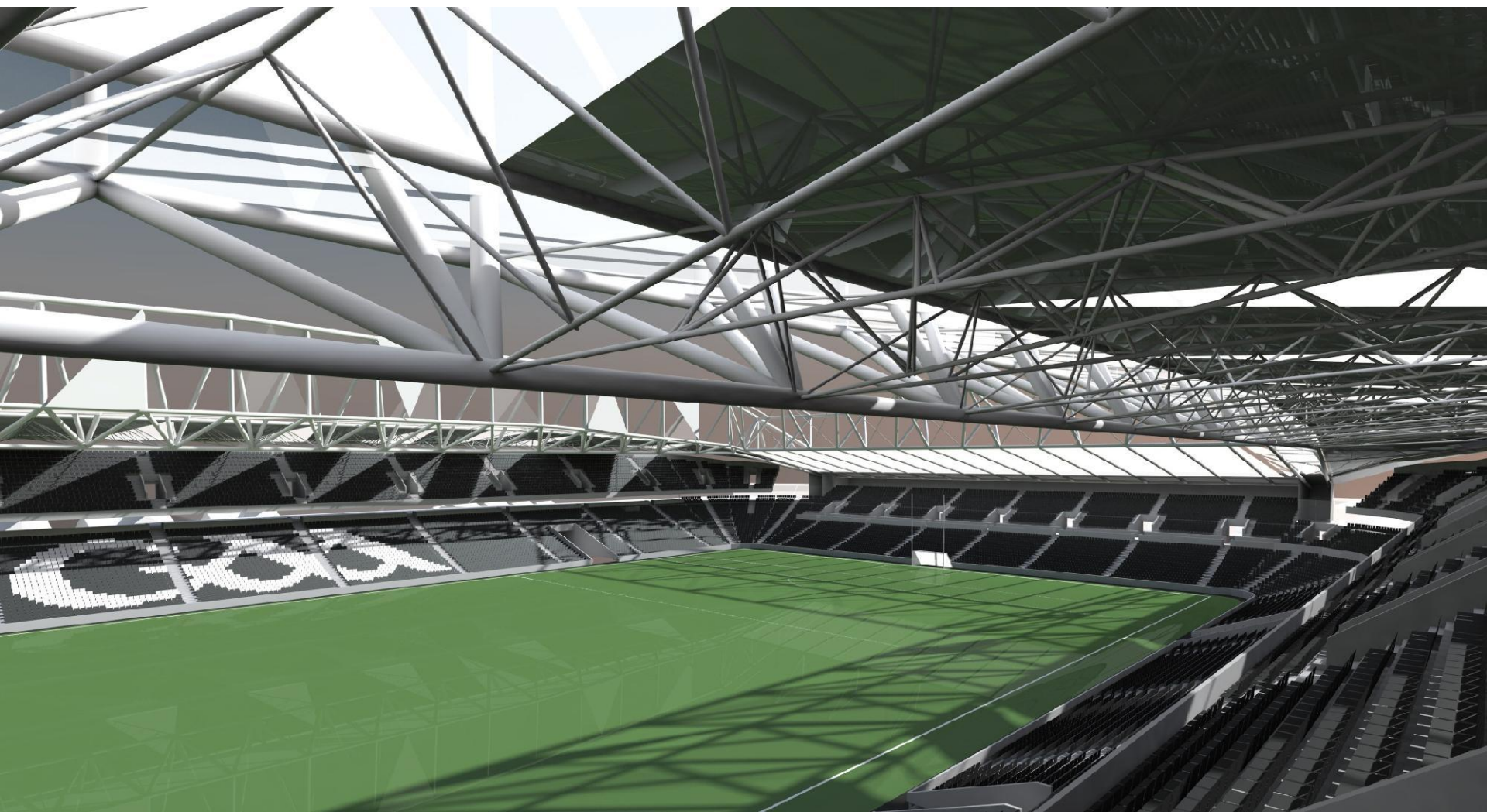


Cloud



Truss

















Thank You
www.ulster.gaa.ie
[@casementpark](#)
[@ulstergaa](#)

Artist's Impression